



# Hand Hygiene Monitor for Standalone Use or with **GO / NO-GO** Relay Output

Develop good hand hygiene habit and monitor hand hygiene to prevent contamination and transmission of unwanted germs and infections



## What is GelCheckGo?

GelCheckGo is a device to detect alcohol level on the skin and provide a **GO** or **NO-GO** signal.

The standalone version gives a **Green** or **Red** visual **GO / NO-GO** with audible output.

The connected version gives an additional **GO / NO-GO** output that can be connected to almost any system including; Retail/Point of Sale, restaurant delivery, cleaning management, door entry systems and more.

When GelCheckGo is installed in your system it could be made compulsory for people to sanitise their hands before being allowed to operate a terminal, serve food, enter a building etc.

## Where can GelCheckGo be used?



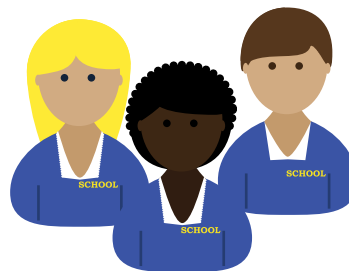
Restaurants & Bars



Retail Outlets



Nursing & Care Homes



Educational Facilities



Leisure Facilities

## Benefits of GelCheckGo

- Easy install - easy to mount on walls with just a couple of screws.
- Simple to set up as standalone. or integrate with an existing system
- Promotes hand hygiene.
- Provides employee/hand hygiene traceability
- Develops good hand hygiene habit within your organisation
- Electronically monitors hand hygiene events.



FOR MORE INFORMATION VISIT  
[WWW.PROMAGEUROPE.COM/GELCHECKGO](http://WWW.PROMAGEUROPE.COM/GELCHECKGO)